

■ **Walt Disney's Comics and Stories – Vol. 15 No. 5**  
**(February 1953)**

Evaluation Date: April 3, 2026



# SUMMARY OF OBSERVATIONS

This comic retains the front cover, back cover, centerfold, and all photographed interior pages. Overall visual presentation is strong, with the front cover showing vivid color saturation and retained surface gloss, and the interior pages displaying clear artwork with consistent age-related toning. The spine remains straight and continuous in overall alignment.

Condition issues are present but localized. The spine exhibits **fine vertical cracking** without long splits or separation. Both staples are present and embedded, showing **visible surface oxidation** without surrounding paper tearing or slot enlargement. The centerfold shows a **tear at one binding point**, visible as a separation along the fold line. Interior pages appear clean and complete away from the centerfold area. The brittleness test image shows a **single page gently flexed**, forming a smooth, shallow arc with no visible fiber fracture on the lifted page.

---

## FRONT COVER — OBSERVATIONS

### Photo Condition & Quality:

Image is sharp and evenly lit, with the full cover visible including edges, corners, and spine. No glare or obstruction; resolution is sufficient to assess surface gloss, spine condition, and edge wear.

### Observations:

- Strong, even color saturation across the cover field.
- Surface gloss is clearly visible.
- Along the spine edge, **fine vertical cracks** are visible, each approximately **2–4 mm in length**, with openings **< 1 mm wide**.
- No long spine splits or exposed interior layers observed.
- Edges show light handling wear; corners show rounding of approximately **3–5 mm** inward.
- No clearly defined paper loss visible on the front cover.

### Overall Impression:

The front cover presents strongly with **light spine cracking and minor handling wear only**.

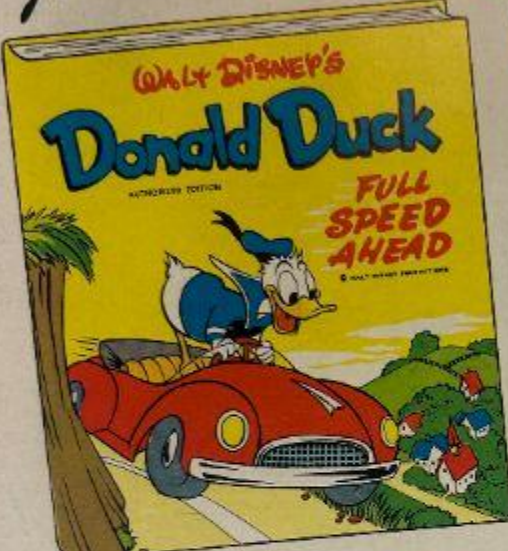
---

# BACK COVER — OBSERVATIONS

## Photo Condition & Quality:

Image is clear, evenly lit, and fully framed. Resolution is sufficient to evaluate surface condition, toning, and edge areas.

Free **DONALD DUCK BOOK**



WITH EACH SUBSCRIPTION TO **WALT DISNEY'S comics and stories**

**SUBSCRIBE NOW!** and receive FREE this beautifully lithographed 28 page book in full color. Size 5½" x 6¾".

Walt Disney's Comics and Stories is the only magazine of authentic Disney characters. It contains clean, wholesome humor, the best in art work, coloring and readability. Approved by parents and teachers everywhere. Suitable for everyone, from ages 3 to 90.


USE THIS HANDY COUPON

Mail to: K. K. PUBLICATIONS, Inc. Dept. 2 Poughkeepsie, N. Y.

Enclosed please find \$\_\_\_\_\_ for which please send a \_\_\_\_\_ year subscription to **WALT DISNEY'S COMICS AND STORIES** and the Free Donald Duck Book to:

PLEASE PRINT  
Name \_\_\_\_\_  
Street and Number \_\_\_\_\_  
City \_\_\_\_\_ Zone \_\_\_\_\_ State \_\_\_\_\_  
Donor's Name \_\_\_\_\_  
Street and Number \_\_\_\_\_  
City \_\_\_\_\_ Zone \_\_\_\_\_ State \_\_\_\_\_

SUBSCRIPTION RATES  
3 years—\$4.00    2 years—\$2.50    1 year—\$1.75    1 year—\$1.00



**Observations:**

- Uniform age toning across the back cover, slightly darker toward outer margins.
- In the **upper-left corner**, a **small area of writing** is visible, appearing as dark markings against the lighter background. The writing is confined to a small area and does not extend into printed text or imagery.
- Paper surface appears flat with no cockling or rippling.
- Edge wear along the bottom and spine edges affects approximately **5–10 mm intermittently**.
- Corner rounding present, approximately **3–5 mm** inward.
- No paper loss observed.

**Overall Impression:**

The back cover remains intact with **uniform toning, light handling wear, and a small area of writing** in the upper-left corner.

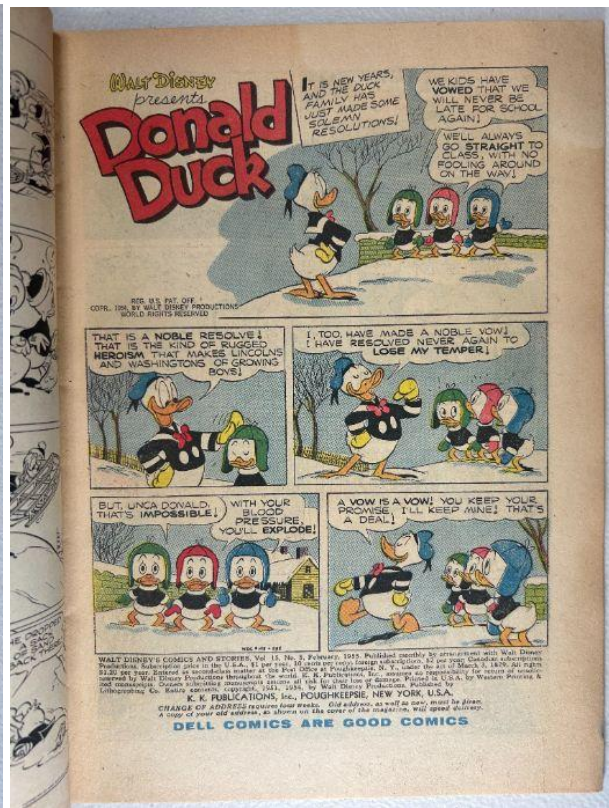
---

# INTERIOR PAGES — OBSERVATIONS

## Photo Condition & Quality:

Images are sharp and evenly lit, showing full interior pages with margins visible. No glare or cropping; resolution is sufficient to assess paper condition and edges.





### Observations:

- Interior pages exhibit **tan to light-tan paper coloration**, darker toward outer margins and lighter near gutters.
- Color remains clear and linework is crisp.
- No interior tearing or paper loss visible on the photographed pages away from the centerfold.
- Minor corner bends visible on some pages, approximately **3–5 mm** inward.
- No writing, ink transfer, or moisture-related distortion observed on interior pages.

### Overall Impression:

Interior pages are **clean, complete, and visually strong**, with only minor handling wear.

# CENTERFOLD — OBSERVATIONS

## Photo Condition & Quality:

Image is in focus and evenly lit, clearly showing both pages and the central gutter; staple areas are unobstructed.



### Observations:

- A **tear is visible at one staple location**, extending along the fold line.
- The tear measures approximately **8–12 mm in length**, with separated paper fibers visible.
- The opposite staple location remains intact.
- No additional paper loss visible beyond the tear.

### Overall Impression:

The centerfold is present but shows a **localized tear at one binding point**.

---

## SPINE — OBSERVATIONS

### Photo Condition & Quality:

Image is sharp and well lit, showing the full spine length; resolution is sufficient to assess cracking and alignment.



### Observations:

- Spine appears straight and continuous overall.
- Several **fine vertical cracks** visible, each approximately **2–4 mm** in length.
- No long splits, separation, or exposed interior page layers observed.

### Overall Impression:

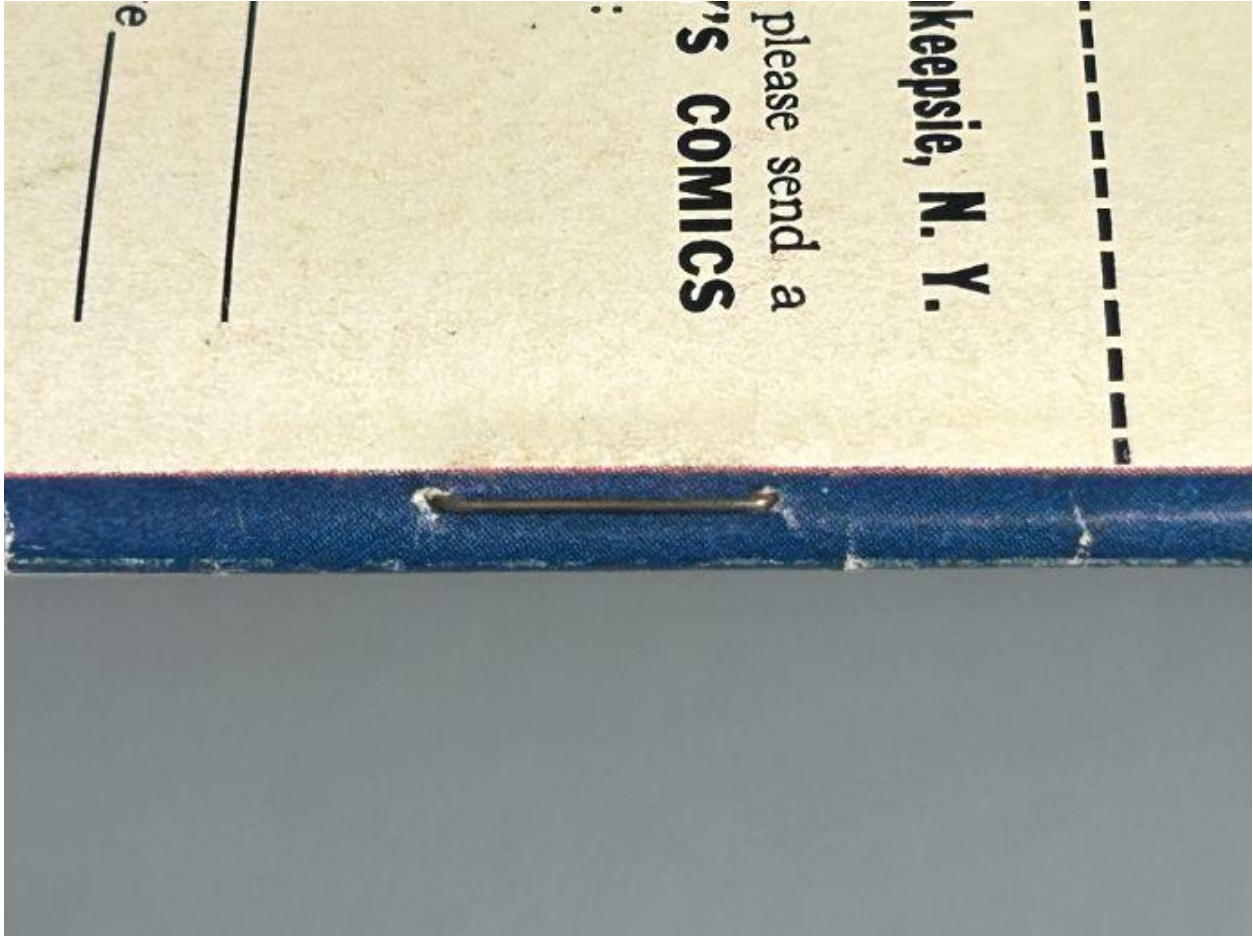
The spine shows **light cracking only**, with good overall structural integrity.

---

## UPPER STAPLE — OBSERVATIONS

### Photo Condition & Quality:

Macro image is sharp and evenly lit; staple and surrounding paper fully visible.



### Observations:

- Metal staple is present and embedded.
- **Surface oxidation** visible as darkened areas on the metal.
- Surrounding paper is intact with no tearing or slot enlargement.

### Overall Impression:

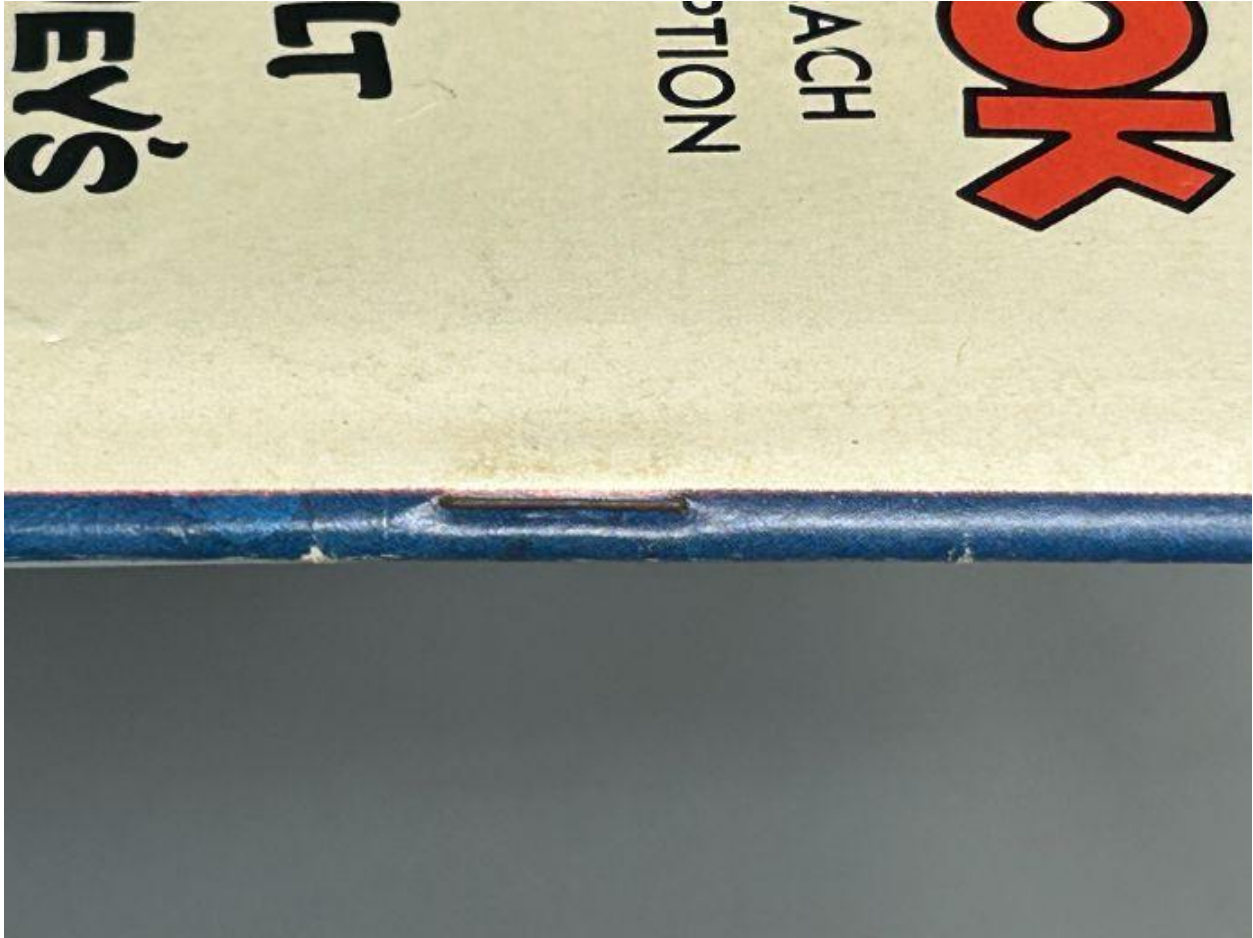
Upper staple remains **structurally sound with surface-level oxidation.**

---

## LOWER STAPLE — OBSERVATIONS

### Photo Condition & Quality:

Macro image is clear, evenly lit, and properly framed.



### Observations:

- Metal staple is present and embedded.
- Oxidation comparable to the upper staple.
- No surrounding paper damage or slot enlargement observed.

### Overall Impression:

Lower staple remains **structurally sound with surface-level oxidation.**

---

# BRITTLENESS TEST — OBSERVATIONS

## Photo Condition & Quality:

Image shows a **single interior page lifted above flat underlying pages**. Slight softness at the extreme corner does not impede evaluation of bend behavior.



## Observations (confined to the lifted page):

- The lifted page bends upward in a **smooth, shallow arc**.
- No visible fiber fracture, splitting, or flaking along the bend line.
- Paper surface appears continuous at the point of flex.

## Overall Impression:

The tested page demonstrates **retained flexibility** and does **not exhibit brittle behavior** under the observed flex.